

- 1
- 2
- 3
- 4
- 5
- 6
- 7
- 8
- 9
- 10
- 11
- 12
- 13
- 14
- 15
- 16
- 17
- 18
- 19

**MATERIAL**

Aluminium, matte finish.  
AISI 304 stainless steel screws and nuts.

**STANDARD EXECUTIONS**

- **GN 241-B**: for round tubes.
- **GN 241-V**: for square tubes.

Surface finish index:

- **BL**: natural colour.
- **SW**: epoxy resin coating resistant to UV rays, RAL 9005 black colour.

**FEATURES AND APPLICATIONS**

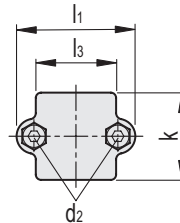
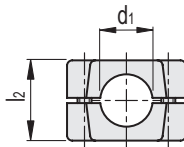
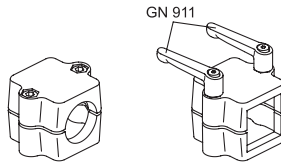
GN 241 tube supports allow an excellent match with tubes GN 990 (see page 1368).

The clamping screw d2 may be replaced by clamping kits GN 911 (see page 1372).



**Conversion Table**  
1 mm = 0.039 inch

d1	
mm	inch
20	0.78
25	0.98
30	1.17
32	1.25
35	1.37
40	1.56
42	1.64
45	1.76
48	1.87
50	1.95
60	2.34



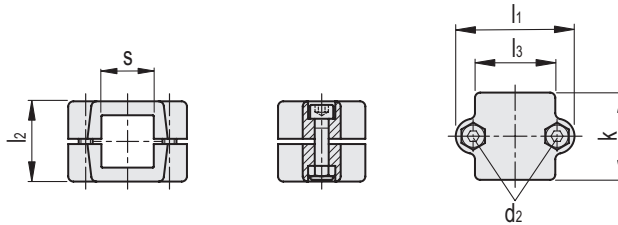
**GN 241-B**

METRIC

Code	Description	d1 Hole	d2	k	l1	l2	l3	d2 Clamping kit	⚖
GN.56011	GN 241-B20-50-2-BL	20	M8	50	68	46	48	GN 911-63-M8-40 / GN 911-78-M8-40	195
GN.56031	GN 241-B25-50-2-BL	25	M8	50	68	46	48	GN 911-63-M8-40 / GN 911-78-M8-40	190
GN.56051	GN 241-B30-50-2-BL	30	M8	50	68	46	48	GN 911-63-M8-40 / GN 911-78-M8-40	185
GN.56071	GN 241-B30-60-2-BL	30	M8	60	79	59	58	GN 911-63-M8-40 / GN 911-78-M8-40	390
GN.56091	GN 241-B32-60-2-BL	32	M8	60	79	59	58	GN 911-63-M8-40 / GN 911-78-M8-40	386
GN.56111	GN 241-B35-60-2-BL	35	M8	60	79	59	58	GN 911-63-M8-40 / GN 911-78-M8-40	374
GN.56131	GN 241-B40-60-2-BL	40	M8	60	79	59	58	GN 911-63-M8-40 / GN 911-78-M8-40	365
GN.56151	GN 241-B40-76-2-BL	40	M10	76	98	70	73	GN 911-78-M10-78 / GN 911-92-M10-92	495
GN.56171	GN 241-B42-76-2-BL	42	M10	76	98	70	73	GN 911-78-M10-78 / GN 911-92-M10-92	490
GN.56191	GN 241-B45-76-2-BL	45	M10	76	98	70	73	GN 911-78-M10-78 / GN 911-92-M10-92	485
GN.56211	GN 241-B48-76-2-BL	48	M10	76	98	70	73	GN 911-78-M10-78 / GN 911-92-M10-92	479
GN.56231	GN 241-B50-76-2-BL	50	M10	76	98	70	73	GN 911-78-M10-78 / GN 911-92-M10-92	465
GN.56241	GN 241-B60-90-2-BL	60	M10	90	108.5	84	83	-	572
GN.56016	GN 241-B20-50-2-SW	20	M8	50	68	46	48	GN 911-63-M8-40 / GN 911-78-M8-40	195
GN.56036	GN 241-B25-50-2-SW	25	M8	50	68	46	48	GN 911-63-M8-40 / GN 911-78-M8-40	190
GN.56056	GN 241-B30-50-2-SW	30	M8	50	68	46	48	GN 911-63-M8-40 / GN 911-78-M8-40	185
GN.56076	GN 241-B30-60-2-SW	30	M8	60	79	59	58	GN 911-63-M8-40 / GN 911-78-M8-40	390
GN.56096	GN 241-B32-60-2-SW	32	M8	60	79	59	58	GN 911-63-M8-40 / GN 911-78-M8-40	386
GN.56116	GN 241-B35-60-2-SW	35	M8	60	79	59	58	GN 911-63-M8-40 / GN 911-78-M8-40	374
GN.56136	GN 241-B40-60-2-SW	40	M8	60	79	59	58	GN 911-63-M8-40 / GN 911-78-M8-40	365
GN.56156	GN 241-B40-76-2-SW	40	M10	76	98	70	73	GN 911-78-M10-78 / GN 911-92-M10-92	495
GN.56176	GN 241-B42-76-2-SW	42	M10	76	98	70	73	GN 911-78-M10-78 / GN 911-92-M10-92	490
GN.56196	GN 241-B45-76-2-SW	45	M10	76	98	70	73	GN 911-78-M10-78 / GN 911-92-M10-92	485
GN.56216	GN 241-B48-76-2-SW	48	M10	76	98	70	73	GN 911-78-M10-78 / GN 911-92-M10-92	479
GN.56236	GN 241-B50-76-2-SW	50	M10	76	98	70	73	GN 911-78-M10-78 / GN 911-92-M10-92	465
GN.56246	GN 241-B60-90-2-SW	60	M10	90	108.5	84	83	-	572

Tube connectors

Conversion Table 1 mm = 0.039 inch	
s	
mm	inch
20	0.78
25	0.98
30	1.17
40	1.56
45	1.76
50	1.95
60	2.34



GN 241-V

METRIC

Code	Description	s Square hole	d2	k	l1	l2	l3	d2 Clamping kit	⚖️
GN.56311	GN 241-V20-50-2-BL	20x20	M8	50	68	46	48	GN 911-63-M8-40 / GN 911-78-M8-40	210
GN.56331	GN 241-V25-50-2-BL	25x25	M8	50	68	46	48	GN 911-63-M8-40 / GN 911-78-M8-40	180
GN.56351	GN 241-V30-50-2-BL	30x30	M8	50	68	46	48	GN 911-63-M8-40 / GN 911-78-M8-40	160
GN.56371	GN 241-V30-60-2-BL	30x30	M8	60	79	59	58	GN 911-63-M8-40 / GN 911-78-M8-40	376
GN.56391	GN 241-V35-60-2-BL	35x35	M8	60	79	59	58	GN 911-63-M8-40 / GN 911-78-M8-40	350
GN.56411	GN 241-V40-60-2-BL	40x40	M8	60	79	59	58	GN 911-63-M8-40 / GN 911-78-M8-40	300
GN.56431	GN 241-V40-76-2-BL	40x40	M10	76	98	70	73	GN 911-78-M10-78 / GN 911-92-M10-92	450
GN.56451	GN 241-V45-76-2-BL	45x45	M10	76	98	70	73	GN 911-78-M10-78 / GN 911-92-M10-92	420
GN.56471	GN 241-V50-76-2-BL	50x50	M10	76	98	70	73	GN 911-78-M10-78 / GN 911-92-M10-92	400
GN.56481	GN 241-V60-90-2-BL	60x60	M10	90	108.5	84	83	-	482
GN.56316	GN 241-V20-50-2-SW	20x20	M8	50	68	46	48	GN 911-63-M8-40 / GN 911-78-M8-40	210
GN.56336	GN 241-V25-50-2-SW	25x25	M8	50	68	46	48	GN 911-63-M8-40 / GN 911-78-M8-40	180
GN.56356	GN 241-V30-50-2-SW	30x30	M8	50	68	46	48	GN 911-63-M8-40 / GN 911-78-M8-40	160
GN.56376	GN 241-V30-60-2-SW	30x30	M8	60	79	59	58	GN 911-63-M8-40 / GN 911-78-M8-40	376
GN.56396	GN 241-V35-60-2-SW	35x35	M8	60	79	59	58	GN 911-63-M8-40 / GN 911-78-M8-40	350
GN.56416	GN 241-V40-60-2-SW	40x40	M8	60	79	59	58	GN 911-63-M8-40 / GN 911-78-M8-40	300
GN.56436	GN 241-V40-76-2-SW	40x40	M10	76	98	70	73	GN 911-78-M10-78 / GN 911-92-M10-92	450
GN.56456	GN 241-V45-76-2-SW	45x45	M10	76	98	70	73	GN 911-78-M10-78 / GN 911-92-M10-92	420
GN.56476	GN 241-V50-76-2-SW	50x50	M10	76	98	70	73	GN 911-78-M10-78 / GN 911-92-M10-92	400
GN.56486	GN 241-V60-90-2-SW	60x60	M10	90	108.5	84	83	-	482



Tube connectors